

HICAZ KAR ŞARKI

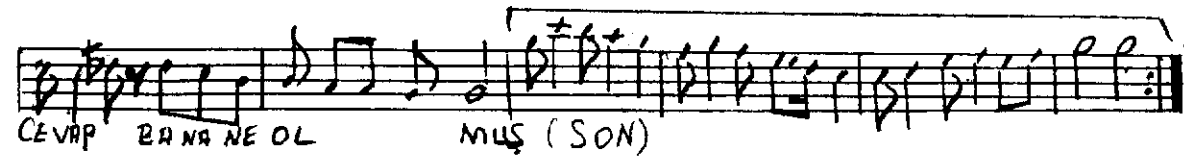
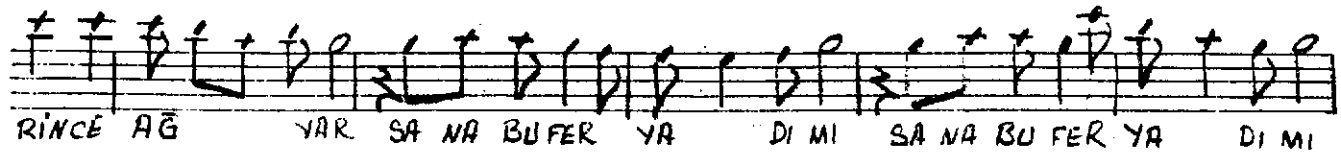
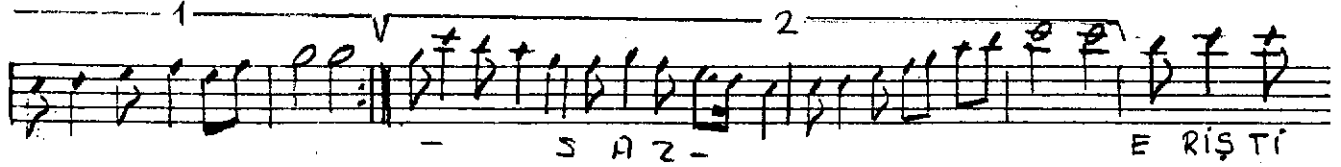
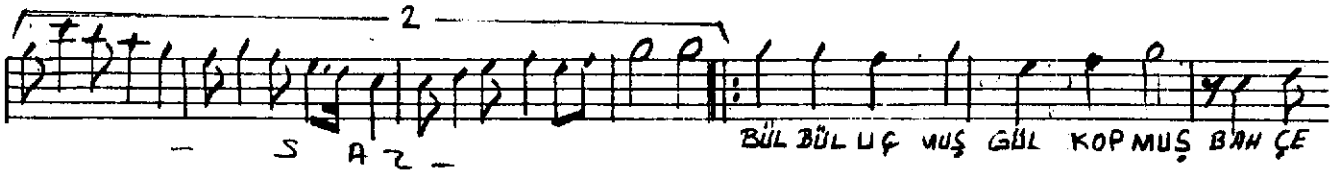
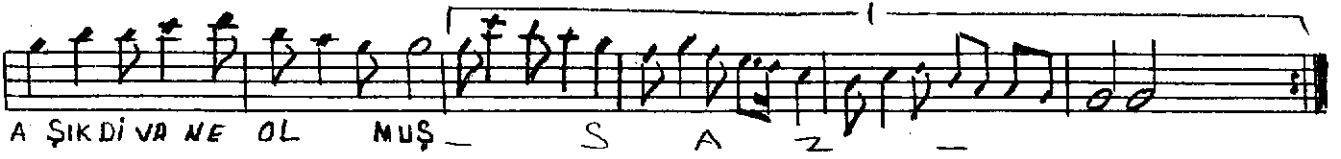
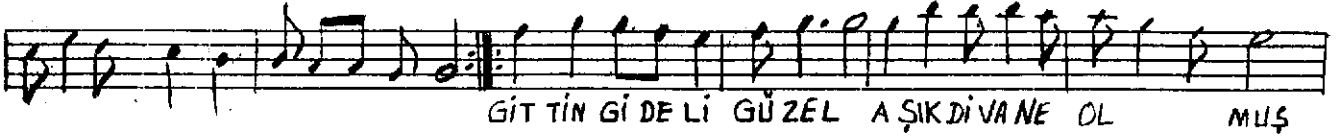
- Gittin gideleli güzel -

TURHAN TAŞAN
Nota Arşivi

Usul: Düyek

$\text{♩} = 144$ Sürre = 4.33'

Güfte: Ali Duygu Gülcü
Beste: Ümit ASIK
16.12.1970 - 1.9.1998



Gittin gideleli güzel Aşık divane olmuştur
Bülbül uçmuş gülleri kopmuş bahçe virane olmuştur
Eriştirince ağyar sana bu feryadımı
Doğru mu ey insafsız cevap "bana ne" olmuştur